

## Local Lockdown planning document Autumn 2020

### 1 Teaching

Maintain high quality of teaching linked to planned English and White Rose maths in event of partial or whole school closure. We will focus on critical aspects that we will teach well. Basic skills inc spelling shed, phonics, TT rockstars, white rose maths will be major part of offer.

Use of Google classroom as a platform and feedback provided by teachers. This will provide remote and blended learning.

Time is being spent now on teacher training and high level class coaching for students to use so they can access prior to closure.

Class dojo used for class 1 as child and parent friendly option with option of google classrooms if required.

As a Christian school, we will also offer RE once a week and PHSE to support any pastoral needs.

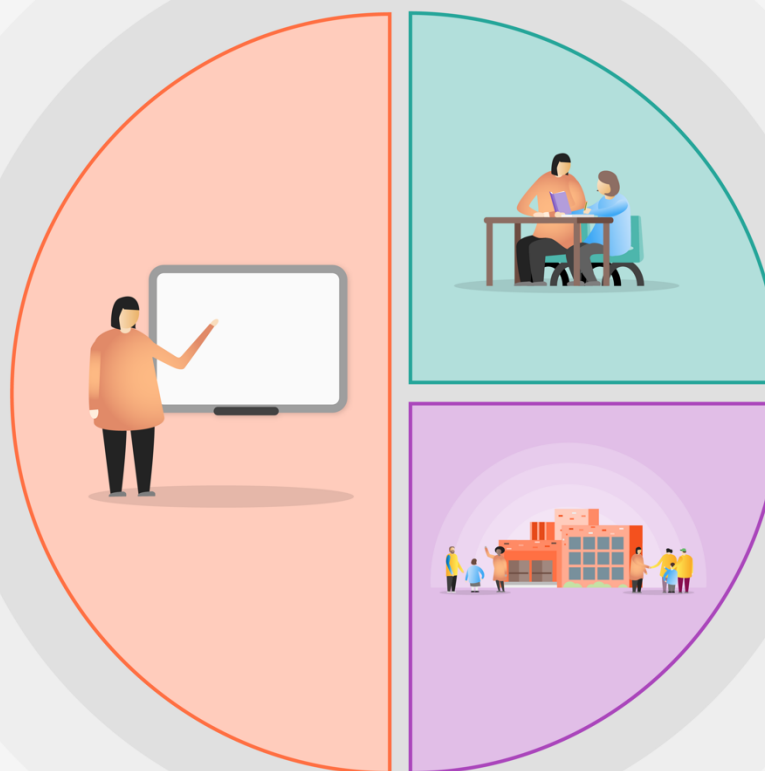
Teachers to use a balance/mix of strategies within lessons planned.

Lessons will be adapted in line with opportunities to learn at home.

To support families by helping them access the provision at times that suit them.

In the event of a teacher being unavailable and being unavailable to follow class plans, school staff will facilitate learning linked to Oak Academy

Provide ongoing technical support before for parents/children and throughout home learning.



### 2 Targeted academic support

Remote learning to cover Maths , English ( which could be reading, comprehension and/or writing and grammar learning and topic work.

Any face to face contact, recorded lessons will focus on delivering key ideas, modelling, explanations and immediate feedback

Feedback will be given via face to face or through online platform.

Parents will be encouraged to interact with class teacher and learning.

Children will be expected to engage with online learning.

Differentiation will be offered according to needs identified by teachers as groups can be facilitated through google classrooms. Care taken for work for children with SEND

### 3 Wider strategies

Home learning will focus on independent practice ( prompts , key words, knowledge organisers) and short quizzes to embed knowledge to long term memory.

Pastoral support offered weekly direct contact with CT or class staff. Frequent contact with parents/children to ensure engaging with home learning.

Accessibility to devices checked. School looking to provide 1 to 1 tech within 3 months.

To communicate a clear and consistent message – it is to be purposeful, achievable and stress free.

Staff availability is clearly publicised to maintain work balance of staff.

Staff meetings at least fortnightly to discuss school offering/strategy

Safeguarding considered high priority

Delivery of food parcels for FSM children