



BRETHERTON ENDOWED CE PRIMARY SCHOOL

Supporting Children with Medical Conditions

“Walking in the footsteps of Jesus with our Christian family, we learn, grow, achieve and flourish together in God’s love.”

This policy is for Bretherton Endowed CE Primary School and The Hub, Bretherton Endowed Out of School Provision.

The overall aim of Bretherton Endowed CE Primary School is to provide a safe, caring and stimulating environment in which the children can learn and experience a ‘broad and balanced curriculum’. We intend our pupils to acquire the skills and knowledge which will enable them to develop as “whole people”; confident and willing, caring and concerned, committed to their own development, yet aware of their responsibilities to others. We hope our pupils will gain independence of thought and action for their own wellbeing and happiness, and that of others.

At Bretherton Endowed we are committed to raising aspirations for children who have special educational needs. Additional needs are picked up early and appropriate, effective support is put in place as it is needed. Children and their families are at the heart of the process and are part of decision making at all stages. By working together, we aim to achieve the best possible life outcomes for our children.

South Road
Bretherton
Leyland
Lancashire
PR26 9AH

01772 600431

Email: head@bretherton.lancs.sch.uk

Head Teacher/SENCo: Mrs Alison Moxham

SEN Governor: Mrs H Fowler

Medicine and Supporting Pupils at School with Medical Conditions Policy

Section 100 of the Children and Families Act 2014 places a duty on the Governing Body and Senior Leadership Team to make arrangements for supporting pupils with medical conditions. Pupils with special medical needs have the same right of admission to school

as other children and cannot be refused admission or excluded from school on medical grounds alone. However, teachers and other school staff in charge of pupils have a common law duty to act in the place of the parent and may need to take swift action in an emergency. This duty also extends to teachers leading activities taking place off the school site. This could extend to a need to administer medicine. The prime responsibility for a child's health lies with the parent who is responsible for the child's medication and should supply the school with information.

This Policy will be reviewed regularly and will be readily accessible to Parents/Carers and staff through our school website.

Policy Implementation

All schools are expected by Ofsted to have a policy dealing with medical needs and to be able to demonstrate that this is implemented effectively. The overall responsibility for the successful administering and implementation of this Policy is given to the Headteacher. She will also be responsible for ensuring that sufficient staff are suitably trained and will ensure cover arrangements in case of staff absences or staff turnover to ensure that someone is always available and on site.

The Headteacher, will be responsible for briefing supply teachers, risk assessments for school visits and other school activities outside of the normal timetable and for the monitoring of individual healthcare plans.

All staff will be expected to show a commitment and awareness of children's medical conditions. All new members of staff will be inducted into the arrangements and guidelines set out in this Policy.

Definitions of Medical Conditions:

Pupils' medical needs may be broadly summarised as being of two types:

- Short-term affecting their participation in school activities because they are on a course of medication.
- Long-term potentially limiting their access to education and requiring extra care and support (deemed special medical needs).

The Role of Staff at Bretherton Endowed

Some children with medical conditions may be disabled. Where this is the case governing bodies must comply with their duties under the Equality Act 2010. Some may also have Special Educational Needs and may have a statement, or Education, Health and Care (EHC) plan which brings together health and social care needs, as well as their special educational provision. For children with SEN, this guidance should be read in conjunction with the SEN Code of Practice and Bretherton Endowed SEN Policy and Information Report.

If a child is deemed to have a long-term medical condition, the school will ensure that arrangements are in place to support them. In doing so, we will ensure that such children can access and enjoy the same opportunities at school as any other child. The school, health professionals, Parents/Carers and other support services will work together to ensure that children with medical conditions receive a full education, unless this would not be in their best interests because of their health needs. In some cases this will require flexibility and involve, for example, programmes of study that rely on part time attendance at school in combination with alternative provision arranged by the Local Authority and health professionals. Consideration will also be given to how children will be reintegrated back into school after long periods of absence.

Staff must not give prescription medicines or undertake health care procedures without appropriate training (updated to reflect any Individual Health Care Plans). At the school, we recognise that a first-aid certificate does not constitute appropriate training in supporting children with medical conditions. Healthcare professionals, including the school nurse, who we have regular access to, will provide training and subsequent confirmation of the proficiency of staff in a medical procedure, or in providing medication.

Procedures to be followed when Notification is received that a Pupil has a Medical Condition

We will ensure that the correct procedures will be followed whenever we are notified that a pupil has a medical condition. The procedures will also be in place to cover any transitional arrangements between schools, the process to be followed upon reintegration or when pupil's needs change and arrangements for any staff training or support. For children starting at Bretherton Endowed arrangements will be in place in time for the start of the relevant school term. In other cases, such as a new diagnosis or children moving to Bretherton Endowed mid-term, we will make every effort to ensure that arrangements are put in place within two weeks.

In making the arrangements, the school will take into account that many of the medical conditions that require support at school will affect quality of life and may be life-threatening. We will also acknowledge that some will be more obvious than others. We will therefore ensure that the focus is on the needs of each individual child and how their medical condition impacts on their school life. The school will ensure that arrangements give Parents/Carers and pupils confidence in the school's ability to provide effective support for medical conditions in school. The arrangements will show an understanding of how medical conditions impact on a child's ability to learn, as well as increase their confidence and promote self-care. We will ensure that staff are properly trained to provide the support that pupils need. Bretherton Endowed will ensure that arrangements are clear and unambiguous about the need to support actively pupils with medical conditions to participate in school trips and visits, or in sporting activities, and not prevent them from doing so. Bretherton Endowed will make arrangements for the inclusion of pupils in such activities with any adjustments as required unless evidence from a clinician such as a GP states that this is not possible. The school will make sure that no child with a medical condition is denied admission or prevented from attending the school because arrangements for their medical condition have not been made.

-

However, in line with our Safeguarding duties, we will ensure that pupils' health is not put at unnecessary risk from, for example infectious diseases. We will therefore not accept a child in school at times where it would be detrimental to the health of that child or others.

The school does not have to wait for a formal diagnosis before providing support to pupils. In cases where a pupil's medical condition is unclear, or where there is a difference of opinion, judgements will be needed about what support to provide based on the available evidence. This would normally involve some form of medical evidence and consultation with Parents/Carers.

Where evidence conflicts, some degree of challenge may be necessary to ensure that the right support can be put in place. This will usually be led by the Headteacher. Following the discussions an Individual Health Care Plan will be put in place.

Where a child has an Individual Health Care Plan, this should clearly define what constitutes an emergency and explain what to do, including ensuring that all relevant staff are aware of emergency symptoms and procedures. Other pupils in the school should know what to do in general terms, such as informing a teacher immediately if they think help is needed.

If a child (regardless of whether they have an Individual Health Care Plan) needs to be taken to hospital, staff should stay with the child until the Parent/Carer arrives, or accompany a child taken to hospital by ambulance.

Individual Health Care Plans

Individual Health Care Plans will be written and reviewed by the school nurse or relevant medical professional or Head Teacher/SENCo but it will be the responsibility of all members of staff supporting the individual children to ensure that the Plan is followed. The class teacher will be responsible for the child's development and ensuring that they and their medical conditions are supported at school.

Individual Healthcare Plans will help to ensure that the school effectively supports pupils with medical conditions. They will provide clarity about what needs to be done, when and by whom. They will often be essential, such as in cases where conditions fluctuate or where there is a high risk that emergency intervention will be needed. They are likely to be helpful in the majority of other cases too, especially where medical conditions are long-term and complex. However, not all children will require one. The school, health care professional and Parents/Carers should agree, based on evidence, when a Health Care Plan would be inappropriate or disproportionate. If consensus cannot be reached, the Headteacher is best placed to take a final view.

A flow chart for identifying and agreeing the support a child needs and developing an individual healthcare plan is provided at the end of this policy.

Individual Health Care Plans will be easily accessible to all who need to refer to them, while preserving confidentiality. Plans will capture the key information and actions that are required to support the child effectively. The level of detail within plans will depend on the complexity of the child's condition and the degree of support needed. This is important because different children with the same health condition may require very different support. Where a child has SEN but does not have a statement or EHC plan, their SEN should be mentioned in their Individual Health Care Plan.

Individual Health Care Plan, (and their Review), may be initiated, in consultation with the Parent/Carer, by a member of school staff or a healthcare professional involved in providing care to the child. The Individual Health Care Plan must be completed by the Lead Professional with support from Parents/Carers, and a relevant healthcare professional, e.g. school, specialist or children's community nurse, who can best advise on the particular needs of the child. Pupils should also be involved whenever appropriate. The responsibility for ensuring it is finalised and implemented rests with the school.

The school will ensure that Individual Health Care Plans are reviewed at least annually or earlier if evidence is presented that the child's needs have changed. They will be developed and reviewed with the child's best interests in mind and ensure that the School assesses and manages risks to the child's education, health and social well-being and minimises disruption. Where the child has a SEN identified in a statement or EHC plan, the Individual Health Care Plan should be linked to or become part of that statement or EHC plan.

The Individual Health Care Plan is specific to each child but it is a necessity that each one includes:

- the medical condition, its triggers, signs, symptoms and treatments
- the pupil's resulting needs, including medication (dose, side-effects and storage) and other treatments, time, facilities, equipment, testing, access to food and drink where this is used to manage their condition, dietary requirements and environmental issues e.g. crowded/noisy conditions, travel time between lessons;
- specific support for the pupil's educational, social and emotional needs - for example, how absences will be managed, requirements for extra time to complete tests, use of rest periods or additional support in catching up with lessons, counselling sessions
- the level of support needed, (some children will be able to take responsibility for their own health needs), including in emergencies. If a child is self-managing their medication, this should be clearly stated with appropriate arrangements for monitoring who will provide this support, their training needs, expectations of their role and confirmation of proficiency to provide support for the child's medical condition from a healthcare professional; and cover arrangements for when they are unavailable
 - who in the school needs to be aware of the child's condition and the support required;
 - arrangements for written permission from Parents/Carer for medication to be administered by a member of staff, or self-administered by the pupil
 - separate arrangements or procedures required for school trips or other school activities outside of the normal school timetable that will ensure the child can participate, e.g. risk assessments;
 - where confidentiality issues are raised by the Parents/Carers or child, the designated individuals to be entrusted with information about the child's condition;
 - what to do in an emergency, including whom to contact, and contingency arrangements. Some children may have an Emergency Health Care Plan prepared by their lead clinician that could be used to inform development of their Individual Health Care Plan. The Emergency Health Care Plan will not be the school's responsibility to write or review.

The Child's Role in managing their own Medical Needs

If it is deemed, after discussion with the Parents/Carers, that a child is competent to manage their own health needs and medicines, the school will encourage them to take responsibility for managing their own medicines and procedures. This will be reflected within Individual Health Care Plans.

Managing Medicines on the Bretherton Endowed Site

The following are the procedures to be followed for managing medicines:

- Medicines should only be administered at the school when it would be detrimental to a child's health or school attendance not to do so.
- No child under 16 should be given prescription or non-prescription medicines without their Parents/Carers written consent.
- We will administer non-prescription medicines to a child, if a Parent/Carer wishes a child to have the non-prescription medicine administered during the school day, they will need to complete the form from the school office with amount, regularity and length of time will be outlined.
- The school will only accept medicines that are in-date, labelled, provided in the case of prescribed medicine, in the original container as dispensed by a pharmacist and include instructions for administration, dosage and storage. The exception to this is insulin which must still be in date, but will generally be available inside an insulin pen or a pump, rather than in its original container.
- All medicines will be stored safely in the School Office, unless they need to be kept in a fridge and then will be stored clearly labelled in the staff room fridge which is not accessible to children. Children should know where their medicines are at all times and be able to access them immediately along with an adult. Where relevant, they should know who holds the key to the storage facility.
- Medicines and devices such as asthma inhalers, blood glucose testing meters and adrenaline pens should be always readily available to children and not locked away; these will be stored in the classroom/ staff room cupboards where both class teacher and child know how to access them and can do so easily. This need will be balanced with the safety of other children in school. If a child requires an asthma inhaler it is crucial that there is an inhaler in the school at all times.
- During school trips, the first aid trained member of staff/member of staff in charge of first aid will carry all medical devices and medicines required.
- Staff administering medicines should do so in accordance with the prescriber's instructions. The school will keep a record of all medicines administered to individual children, stating what, how and how much was administered, when and by whom. Any side effects of the medication to be administered at the school should be noted. Written records are kept of all medicines administered to children. These records offer protection to staff and children and provide evidence that agreed procedures have been followed.
- When no longer required, medicines should be returned to the Parent/Carer to arrange for safe disposal. Sharps boxes should always be used for the disposal of needles and other sharps.

Unacceptable Practice

Although school staff should use their discretion and judge each case on its merits with reference to the child's Individual Health Care Plan, it is not generally acceptable practice to:

- prevent children from easily accessing their inhalers and medication and administering their medication when and where necessary assume that every child with the same condition requires the same treatment, ignore the views of the child or their Parents/Corers; or ignore medical evidence or opinion, (although this may be challenged)
- send children with medical conditions home frequently or prevent them from staying for normal school activities, including lunch, unless this is specified in their individual

healthcare plans

- if the child becomes ill, send them to the school office unaccompanied or with someone unsuitable

- penalise children for their attendance record if their absences are related to their medical condition e.g. hospital appointments

- prevent pupils from drinking, eating or taking toilet or other breaks whenever they need to in order to manage their medical condition effectively

- require Parents/Carers, or otherwise make them feel obliged, to attend the school to administer medication or provide medical support to their child, including with toileting issues. No Parent/Carer should have to give up working because the school is failing to support their child's medical needs; or

- prevent children from participating, or create unnecessary barriers to children participating in any aspect of school life, including school trips, e.g. by requiring Parents/Carers to accompany the child.

Complaints

Should Parents/Carers or pupils be dissatisfied with the support provided they should discuss their concerns directly with the school. If for whatever reason this does not resolve the issue, they may make a formal complaint via the complaints procedure outlined in the school's Compliments and Complaints Policy.

How parents may access the policy

Copies of policies can be requested at the school office. The policies can be found on the school website in the SEN area.

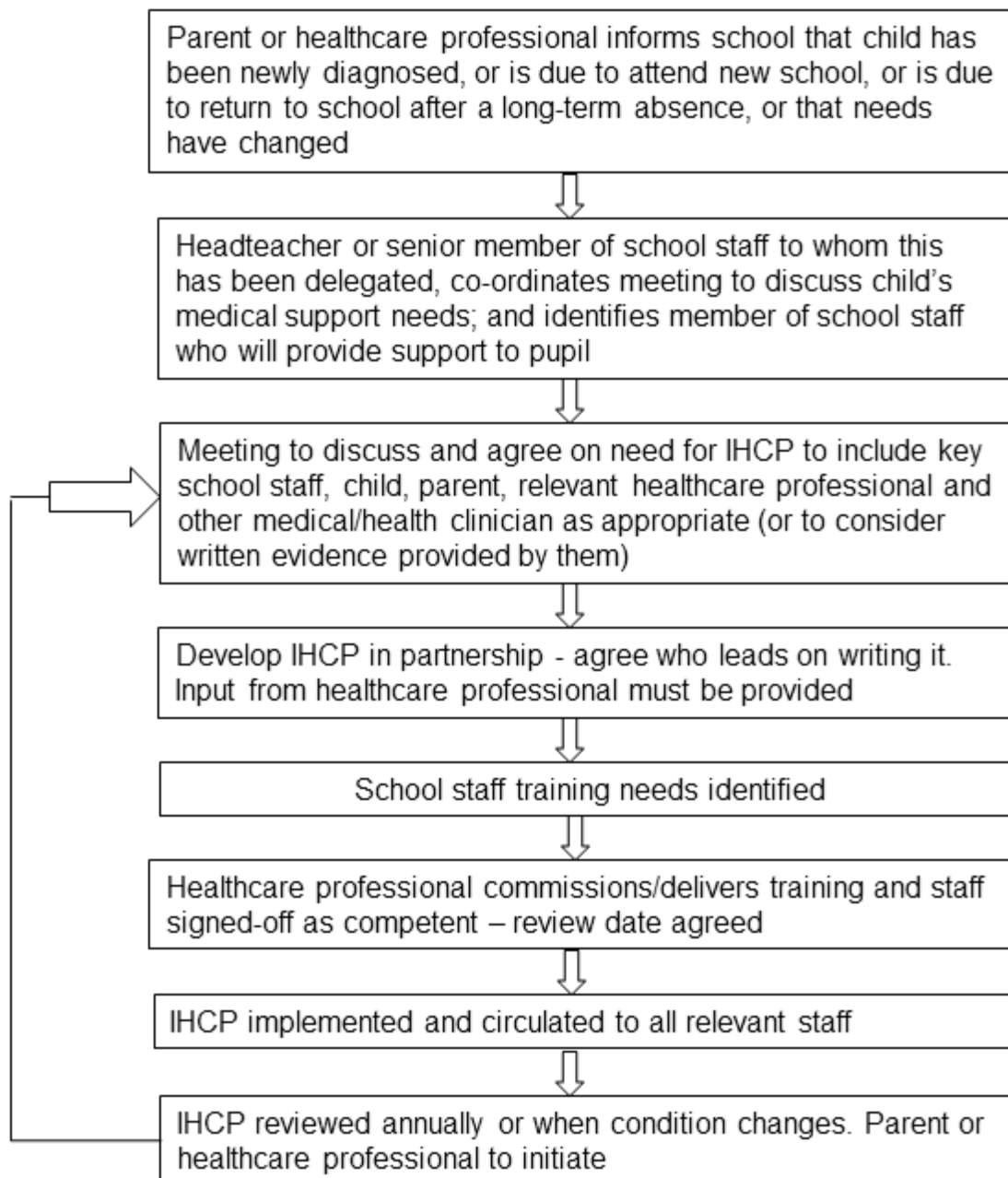
Other policies supporting SEND include: *SEN Policy* and *Changing Children and intimate care policy*.

This policy was reviewed in November 2021

The policy was ratified by the Governing Body

This policy will be reviewed annually.

Model process for developing individual healthcare plans



Copied from - Supporting pupils at school with medical conditions (DfE April 2010)

Appendix 1 : Content and recommended format of individual healthcare plans

When deciding what information should be recorded on individual healthcare plans, the following are considered:

- the medical condition, its triggers, signs, symptoms and treatments;
- the pupil's resulting needs, including medication (dose, side-effects and storage) and other treatments, time, facilities, equipment, testing, access to food and drink where this is used to manage their condition, dietary requirements and environmental issues e.g. crowded corridors, travel time between lessons;
- specific support for the pupil's educational, social and emotional needs – for example, how absences will be managed, requirements for extra time to complete exams, use of rest periods or additional support in catching up with lessons, counselling sessions;
- the level of support needed, (some children will be able to take responsibility for their own health needs), including in emergencies. If a child is self-managing their medication, this should be clearly stated with appropriate arrangements for monitoring;
- who will provide this support, their training needs, expectations of their role and confirmation of proficiency to provide support for the child's medical condition from a healthcare professional; and cover arrangements for when they are unavailable;
- who in the school needs to be aware of the child's condition and the support required;
- arrangements for written permission from parents and the Head Teacher for medication to be administered by a member of staff, or self-administered by the pupil during school hours;
- separate arrangements or procedures required for school trips or other;
- school activities outside of the normal school timetable that will ensure the child can participate, e.g. risk assessments;
- where confidentiality issues are raised by the parent/child, the designated individuals to be entrusted with information about the child's condition; and
- what to do in an emergency, including whom to contact, and contingency arrangements. Some children may have an emergency healthcare plan prepared by their lead clinician that could be used to inform development of their individual healthcare plan.

Template A: Individual Healthcare Plan

Name of school/setting

Child's name

Group/class/form

Date of birth

Child's address

Medical diagnosis or condition

Date

Review date

Family Contact Information

Name

Phone no. (work)

(home)

(mobile)

Name

Relationship to child

Phone no. (work)

(home)

(mobile)

Clinic/Hospital Contact

Name

Phone no.

G.P.

Name

Phone no.

Who is responsible for providing support in school

(DoH – October 2014)

Describe medical needs and give details of child's symptoms, triggers, signs, treatments, facilities, equipment or devices, environmental issues etc

Name of medication, dose, method of administration, when to be taken, side effects, contra-indications, administered by/self-administered with/without supervision

Daily care requirements

Specific support for the pupil's educational, social and emotional needs

Arrangements for school visits/trips etc

Other information

Describe what constitutes an emergency, and the action to take if this occurs

Who is responsible in an emergency (*state if different for off-site activities*)

Plan developed with

Staff training needed/undertaken – who, what, when

Form copied to

Template B: Parental Agreement for Setting to Administer Medicine

The school/setting will not give your child medicine unless you complete and sign this form, and the school or setting has a policy that the staff can administer medicine.

Date for review to be initiated by

--

Name of school/setting

--

Name of child

--

Date of birth

--

Group/class/form

--

Medical condition or illness

--

Medicine

Name/type of medicine

(as described on the container)

--

Expiry date

--

Dosage and method

--

Timing

--

Special precautions/other instructions

--

Are there any side effects that the school/setting needs to know about?

--

Self-administration – y/n

--

Procedures to take in an emergency

--

NB: Medicines must be in the original container as dispensed by the pharmacy

Contact Details

Name

--

Daytime telephone no.

--

Relationship to child

--

Address

[agreed member of staff]

I understand that I must deliver the medicine personally to

The above information is, to the best of my knowledge, accurate at the time of writing and I give consent to school/setting staff administering medicine in accordance with the school/setting policy. I will inform the school/setting immediately, in writing, if there is any change in dosage or frequency of the medication or if the medicine is stopped.

Signature(s) _____

Date _____

Template C: Record of Medicine Administered to an Individual Child

Name of school/setting	
Name of child	
Date medicine provided by parent	
Group/class/form	
Quantity received	
Name and strength of medicine	
Expiry date	
Quantity returned	
Dose and frequency of medicine	

Staff signature _____

Signature of parent _____

Date			
Time given			
Dose given			
Name of member of staff			
Staff initials			

Date			
Time given			

Dose given

--	--	--

Name of member of staff

--	--	--

Staff initials

--	--	--

C: Record of medicine administered to an individual child (Continued)

Date

--	--	--

Time given

--	--	--

Dose given

--	--	--

Name of member of staff

--	--	--

Staff initials

--	--	--

Date

--	--	--

Time given

--	--	--

Dose given

--	--	--

Name of member of staff

--	--	--

Staff initials

--	--	--

Date

--	--	--

Time given

--	--	--

Dose given

--	--	--

Name of member of staff

--	--	--

Staff initials

--	--	--

Date

--	--	--

Time given

--	--	--

Dose given

--	--	--

Name of member of staff

--	--	--

Staff initials

--	--	--

(DoH – October 2014)

Template E: Staff Training Record – Administration of Medicines

Name of school/setting

Name

Type of training received

Date of training completed

Training provided by

Profession and title

I confirm that [name of member of staff] has received the training detailed above and is competent to carry out any necessary treatment. I recommend that the training is updated [name of member of staff].

Trainer's signature

Date

I confirm that I have received the training detailed above.

Staff signature

Date

Suggested review date

Template F: Contacting Emergency Services

Request an ambulance - dial 999, ask for an ambulance and be ready with the information below.

Speak clearly and slowly and be ready to repeat information if asked.

1. your telephone number
2. your name
3. your location as follows [insert school/setting address]
4. state what the postcode is – please note that postcodes for satellite navigation systems may differ from the postal code
5. provide the exact location of the patient within the school setting
6. provide the name of the child and a brief description of their symptoms
7. inform Ambulance Control of the best entrance to use and state that the crew will be met and taken to the patient
8. put a completed copy of this form by the phone