

# What Parents & Carers Need to Know about NETFLIX

Netflix is a subscription-based streaming service that allows users to watch TV shows and movies on any internet-enabled device that supports the software, such as smart TVs, phones and tablets. The pandemic saw a surge in children consuming on-demand content as many families relaxed their screen-time rules. Netflix's diverse range of programming caters for all age groups – so it's important for parents to recognise the potential risks of children using the service and the measures to help their child enjoy a safe streaming experience.

## INAPPROPRIATE CONTENT

Netflix produces and curates an extensive catalogue of content that can provide hours of entertainment. If they share the same user account as an adult, this can potentially lead to children accidentally viewing all manner of inappropriate content, including nudity, profanity and extreme violence. This can happen easily on shared accounts, as Netflix cannot establish who's watching.

## BINGE-WATCHING

Netflix allows users to view shows and movies quickly and easily without adverts or interruptions, making excessive screen time a concern. Binge-watching has become more common during the pandemic, due to Netflix's regularly updated content and algorithms which recommend content very similar to what's previously been enjoyed. Marathon viewing sessions can lead to children staying up too late, affecting their mood and concentration the next day.

## SCREEN ADDICTION

From TVs and phones to consoles and tablets, Netflix is available on almost any device with an internet connection – making it extremely difficult to manage children's screen time. The service is now adding games to its mobile app, tempting users to spend even more time on the platform. Screen addiction can distract children from important activities like schoolwork and socialising, and can impact their health by reducing their exercise and sleep.

## HACKING ATTEMPTS

With millions of users worldwide, Netflix is often targeted by hackers who try to steal usernames and passwords to gain access to people's accounts. If successful, they can then steal payment details or try to sell stolen personal data on the dark web, providing other criminals with a profitable opportunity. Netflix also doesn't provide two-factor authentication, making the hackers' task that little bit easier.

## CONTACT FROM STRANGERS

Netflix's Teleparty feature became popular during lockdown periods as it allows users from different households (friends and relatives, for example) to synchronise when they watch content. It requires an access link to be sent to the people you wish to invite: the link, however, can also be distributed to people you *don't* know. A text chat feature enables interaction with the other users in real-time: this represents a risk to children if a stranger gains access to the Teleparty.



## Advice for Parents & Carers

### KEEP ACCOUNTS SECURE

Netflix doesn't use two-factor authentication, so a strong password is vital. Your child's Netflix password should be unique (not one they've used elsewhere) and a minimum of eight characters with a mix of letters, numbers and symbols. Emphasise not to share their login details with anyone and remind them to always log out after using the app – so their account remains inaccessible, even if their device is lost or stolen.



### CHECK MATURITY RATING

Netflix warns about content that includes violence, sex, profanity and nudity. These warnings form part of the show or movie's 'maturity rating'. Users can restrict age ratings to avoid children viewing age-inappropriate content. On their profile, open the Profile and Parental Control settings and choose the maturity level for the shows and movies you want to allow.



### CREATE A KIDS' PROFILE

Setting up a Netflix Kids experience profile means your child can only access content which is suitable for children aged up to 12 years. All other content is automatically blocked. This rating can be further restricted via the child's profile settings. Setting up a Netflix Kids experience profile will help to prevent your child from viewing age-inappropriate content.



### SET UP PROFILE PINS

Netflix account holders can lock profiles using a four-digit PIN. Doing this can prevent your child from accessing the wrong account and viewing content that isn't appropriate for their age. Try setting a PIN for each account on your Netflix app – ideally avoiding numbers that would be easily guessed, such as dates of birth. Remember not to share these PINs with anyone, including family.



### SWITCH OFF AUTO-PLAY

When a show or movie concludes, Netflix's algorithms select content with similar themes that it thinks your child will enjoy next. This new content starts automatically after a 10-second countdown. Disabling this auto-play feature reduces the possibility of your child being shown something inappropriate and provides a natural break to help prevent them becoming too immersed in Netflix.



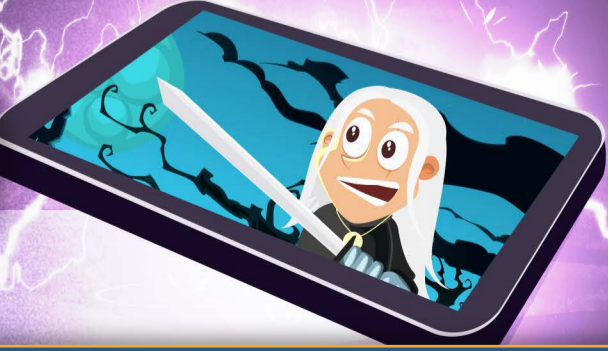
### CHECK VIEWING HABITS

Netflix has tools which enable parents and carers to monitor what their child has been watching. Selecting 'Viewing Activity' in each profile's account settings displays a list of what content has been viewed (and when). This can reassure parents that their child is watching age-appropriate content and can open avenues for discussing your child's favourite shows and movies, and why they like them.



## Meet Our Expert

Dr Claire Sutherland is an online safety consultant, educator and researcher who has developed and implemented anti-bullying and cyber safety policies for schools. She has written various academic papers and carried out research for the Australian government comparing internet use and sexting behaviour of young people in the UK, USA and Australia.



National Online Safety®

#WakeUpWednesday